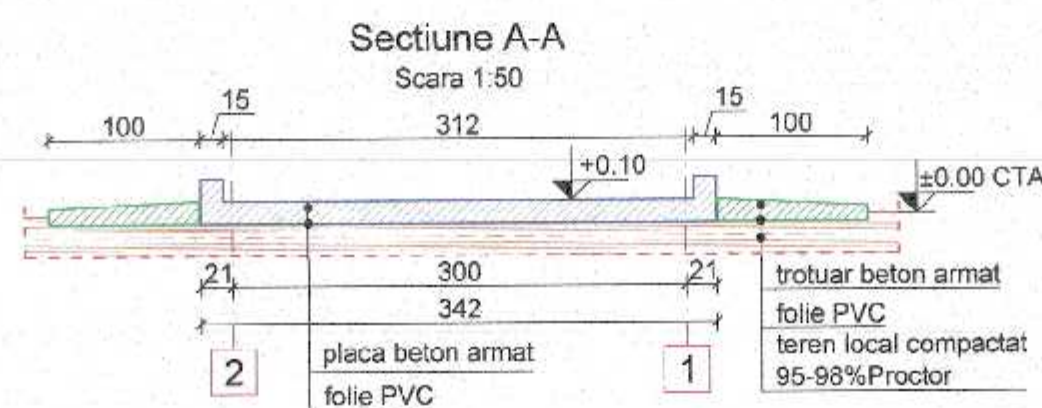
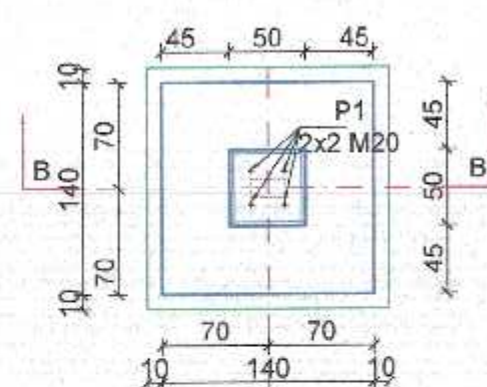


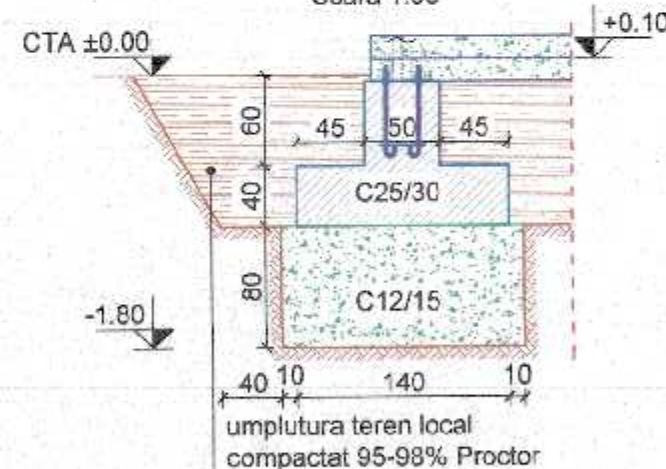
Scara 1:50



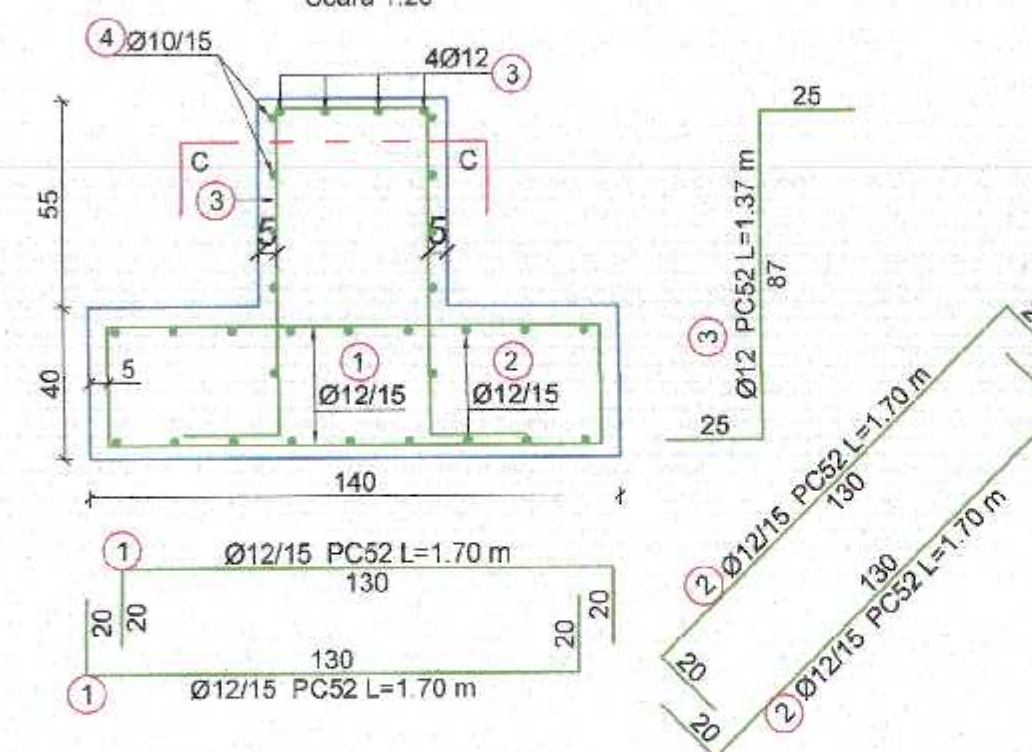
Scara 1:50



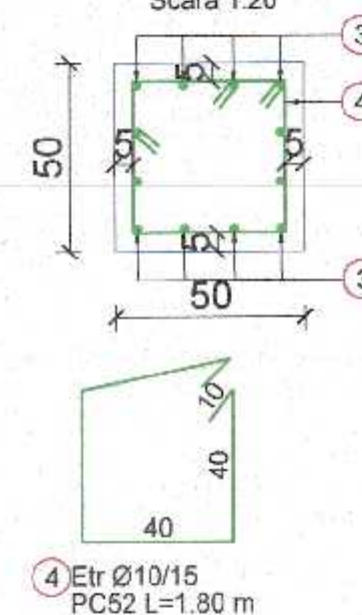
Scara 1:50



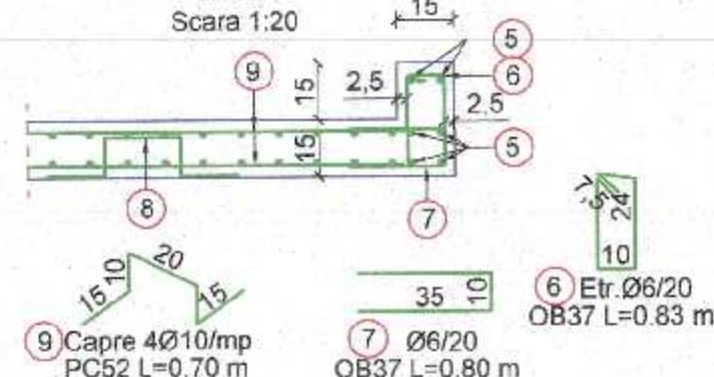
Scara 1:20



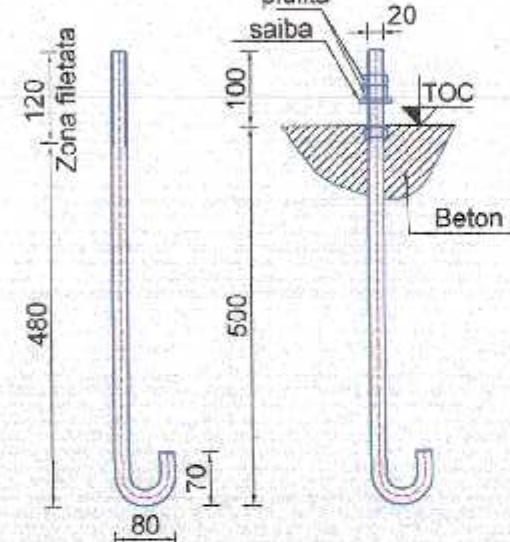
Scara 1:20



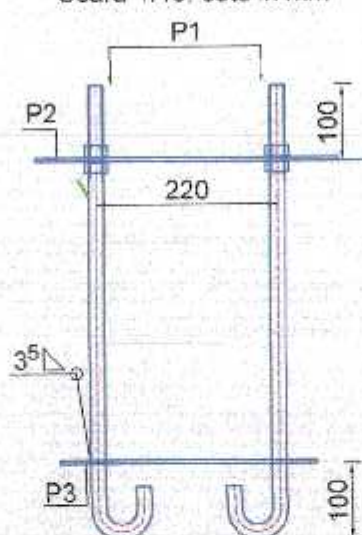
- armare-



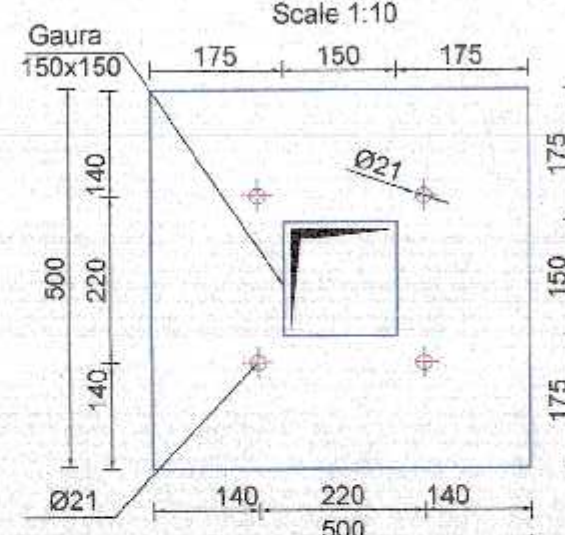
Scala 1:10, cote in mm



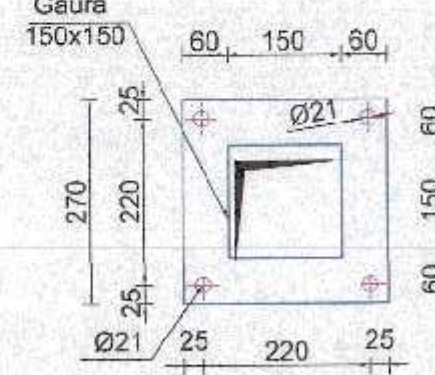
Scara 1:10, cote in mm



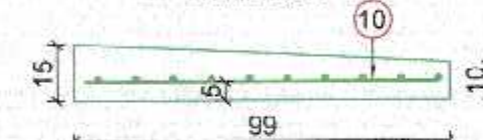
Scale 1:10



Scale 1:10



Scara 1:20



Placi și buioane de ancorare Fundatie								
Poz.	Nume	Material	Norma Produs	Buc.	Dimensiuni (mm)	Greutate		
						kg/pcs	kg/m	Total
P1	Bulon M20	Gr 5.8(S355)	STAS 2350/92	16	750	-	2.47	29,64
	Piuitia	Gr.5	SR EN 4032-13	32	M20	0,600	-	19,20
	Saiba	Gr.C	SR EN ISO 7091:03	16	M20	0,165	-	2,64
P2	Placa	S235	SR EN 10029-2011	4	5 500 500	9,81	-	39,26
P3	Placa	S235	SR EN 10029-2011	4	5 270 270	2,86	-	11,45
Total (kg) - including 3%								105

EXTRAS ARMATURA									
Marca	Aria (mp)	Diametrul (mm)	Lungime (m)	Buc.	Lungimi totale				
					OB37		PC52		STN
					Ø6	Ø8	Ø10	Ø12	Ø6
1		12	1,70	72				122,4	
2		12	1,70	72				122,4	
3		12	1,37	48				65,76	
4		10	1,8	20			36		
5		8	13,06	6		76			
6		6	0,83	60	49,80				
7		6	0,80	78	62,40				
8		10	0,7	30			21		
9	12,9	6		2					258
10	20	6		1					400
Lungime Ø (m)					112,20	78,00	67,00	310,56	658,0
Greutate pe metru (kg/m)					0,222	0,395	0,617	0,888	0,22
Greutate pe diametru (kg)					25	31	35	276	146
Greutate totala pe tipul de armatura(kg)					25		342		146
Greutate totala (kg)					513				

- LISTA CANTITATI:

- BETON SIMPLU - C12/15: 8.20m³;
- BETON ARMAT - C25/30: 6.70m³;
- SAPATURA: 43.0m²;
- UMLPUTURA TEREN LOCAL: 38.0m²;
- FOLIE PVC: 35m²;
- COFRAJ: 20m²;
- ARMATURA: 513 kg.
- PIESE INGLOBATE: 105 kg.

NOTA

- CATEGORIA DE IMPORTANTA "C" conform HG 766/1997
- CLASA DE IMPORTANTA "III" conform P100-1/2013;
- CONSTRUCTIA ESTE AMPLASATA IN ZONA SEISMICA CU ACCELERATIA TERENULUI PENTRU PROIECTARE $a_g = 0.35g$ SI PERIOADA DE CONTROL(DE COLT) $T_c = 0.70$ s - conform P100 - 1 / 2013
- DIMENSIUNI / COTE DESEN : IN CM;
- DOMENIUL DE VERIFICARE: A1.

ATTENZIONE

- SE RECOMANDA CA EXCAVATIILE GROSIERE SA SE EXECUTE IN RITM ALERT, PE CAT POSSIBIL INTR-O PERIOADA LIPSITA DE PRECIPITATII, IAR LUCRARILE SA FIE SUPRAVEGHEATE DE GEOTEHNICIAN;
- ULTIMUL STRAT DE PE FUNDUL SAPATURII (CIRCA 20 CM) VA FI INDEPARTAT INAINTE DE TURNAREA STRATULUI DE EGALIZARE DIN BETON SIMPLU.

MATERIALE:

- BETON :
- BETON ARMAT- C25/30 - XC4+XF1; CEM II A-S 32,5 N EN 197-1, GRANULATIE AGREGATE - Dmax. 16mm
- BETON SIMPLU - C12/15 - X0; CEM II A-S 32,5 N EN 197-1, S1-S3, GRANULATIE AGREGATE - Dmax. 22mm
- ARMATURA : OB37; PC52; STNB
- OTEL: S235;

[illegible]